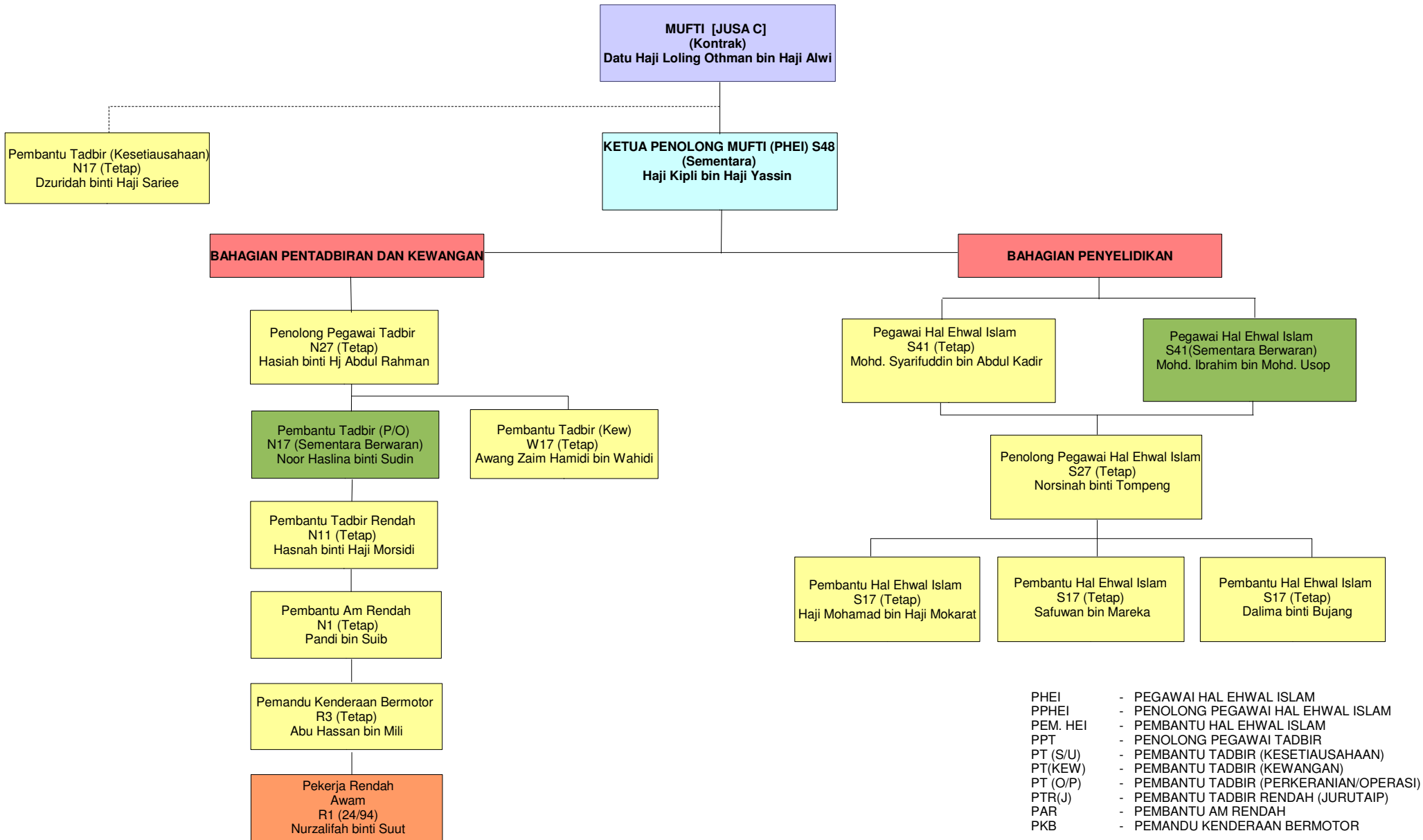


CARTA ORGANISASI PEJABAT MUFTI NEGERI SARAWAK



ACTING COVERING NOMINATION LIST FOR YEAR 2008

MUFTI (JUSA C)	
(Kontrak)	
Datu Haji Loling Othman bin Haji Alwi	
Acting	Tiada
Covering	Haji Kipli bin Haji Yassin

Pembantu Tadbir (Kesetiausahaan) N17	
(Tetap)	
Dzuridah binti Haji Sariee	
Acting	Tiada
Covering	Hasnah binti Haji Morsidi

KETUA PENOLONG MUFTI (PHEI) S48	
(Sementara)	
Haji Kipli bin Haji Yassin	
Acting	Tiada
Covering	Haji Mohd. Syarifuddin bin Abdul Kadir

BAHAGIAN PENTADBIRAN DAN KEWANGAN

BAHAGIAN PENYELIDIKAN

Penolong Pegawai Tadbir , N27	
(Tetap)	
Hasihah binti Haji Abdul Rahman	
Acting	Tiada
Covering	Awang Zaim Hamidi bin Wahidi

Pegawai Hal Ehwal Islam, S41	
(Tetap)	
Haji Mohd. Syarifuddin bin Abdul Kadir	
Acting	Tiada
Covering	Haji Mohd. Ibrahim bin Mohd. Usuf

Pegawai Hal Ehwal Islam, S41	
(Sementara Berwaran)	
Haji Mohd. Ibrahim bin Mohd. Usuf	
Acting	Tiada
Covering	Norsinah binti Tompeng

Pembantu Tadbir (P/O), N17	
(Sementara Berwaran)	
Noor Haslina binti Sudin	
Acting	Tiada
Covering	Hasnah binti Haji Morsidi

Pembantu Tadbir (Kew), N17	
(Tetap)	
Awang Zaim Hamidi bin Wahidi	
Acting	Tiada
Covering	Noor Haslina binti Sudin

Penolong Pegawai Hal Ehwal Islam, S27	
(Tetap)	
Norsinah binti Tompeng	
Acting	Tiada
Covering	Haji Mohamad bin Haji Mokarat

Pembantu Tadbir Rendah , N11	
(Tetap)	
Hasnah binti Haji Morsidi	
Acting	Tiada
Covering	Tiada

Pembantu Hal Ehwal Islam, S17	
(Tetap)	
Dalima binti Bujang	
Acting	Tiada
Covering	Safuwan bin Mareka

Pembantu Hal Ehwal Islam, S17	
(Tetap)	
Safuwan bin Mareka	
Acting	Tiada
Covering	Dalima binti Bujang

Pembantu Hal Ehwal Islam, S17	
(Tetap)	
Haji Mohamad bin Haji Mokarat	
Acting	Tiada
Covering	Safuwan bin Mareka

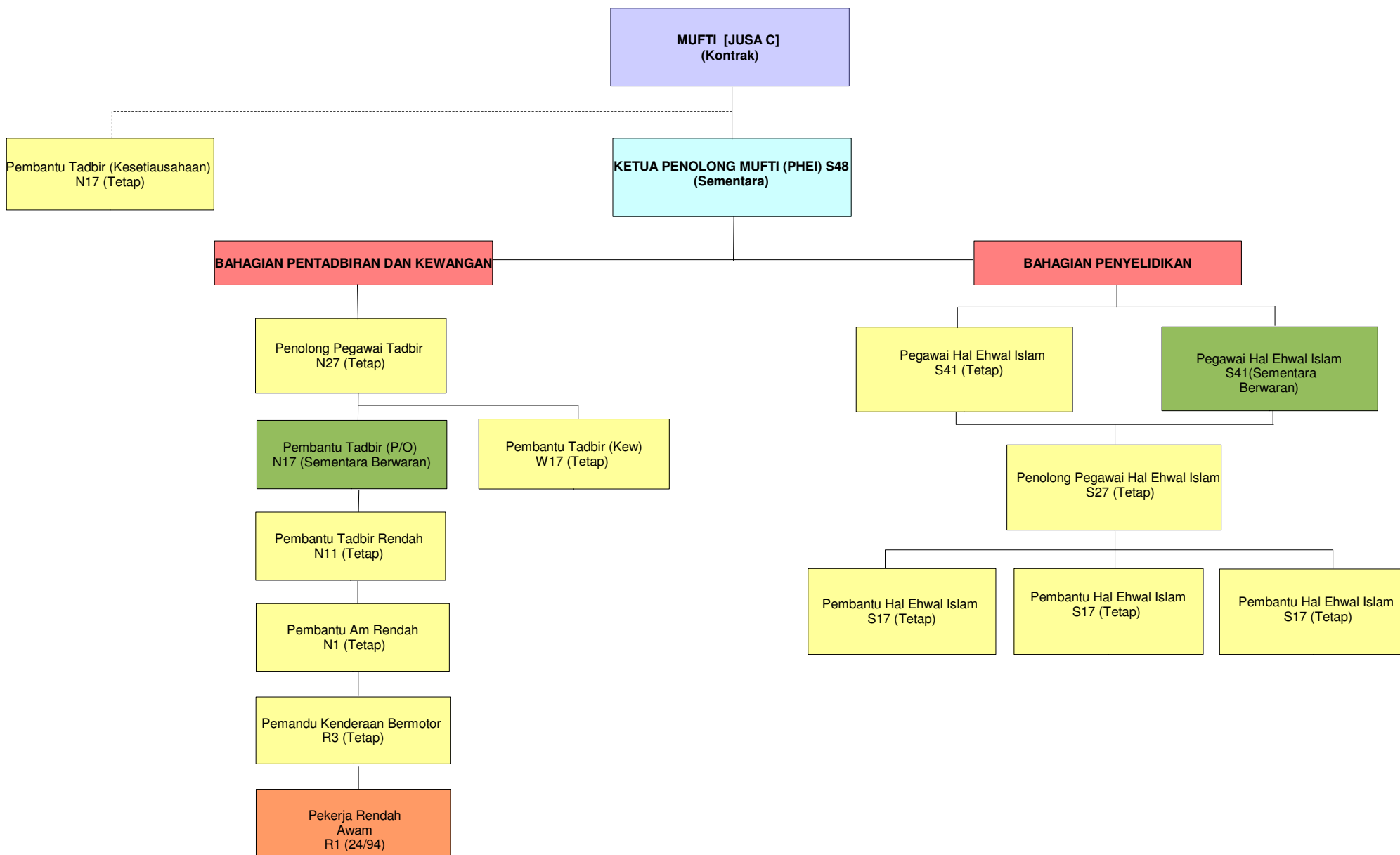
Pembantu Am Rendah , N1	
(Tetap)	
Pandi bin Suib	
Acting	Tiada
Covering	Tiada

Pemandu Kenderaan Bermotor, R3	
(Tetap)	
Abu Hassan bin Mili	
Acting	Tiada
Covering	Tiada

Pekerja Rendah Awam, R1	
(24/94)	
Nurzalifah binti Su'ut	
Acting	Tiada
Covering	Tiada

CARTA ORGANISASI PEJABAT MUFTI NEGERI SARAWAK (SEDIA ADA)

Lampiran A1



CARTA FUNGSI PEJABAT MUFTI NEGERI SARAWAK (SEDIA ADA)

